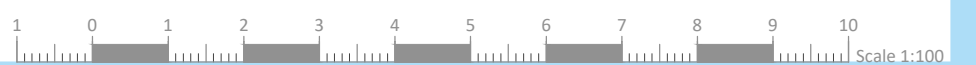


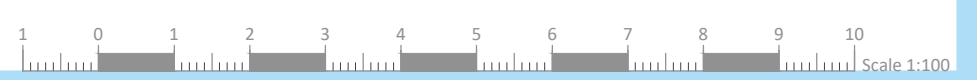
LOWER BASEMENT LEVEL

PROPOSED
Scale 1:100





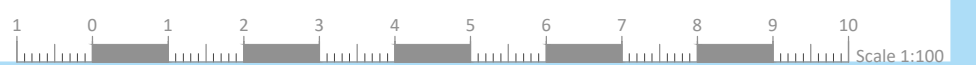
UPPER BASEMENT LEVEL
 PROPOSED
 Scale 1:100



| UNIT | INTERNAL | EXTERNAL | TOTAL |
|------|----------|----------|-----------|
| 1A | 93.6 sqm | 10.1 sqm | 103.7 sqm |
| 2A | 90.9 sqm | 8.4 sqm | 99.3 sqm |
| 1B | 76.5 sqm | 16.2 sqm | 92.7 sqm |
| 2B | 82 sqm | 18.4 sqm | 100.4 sqm |



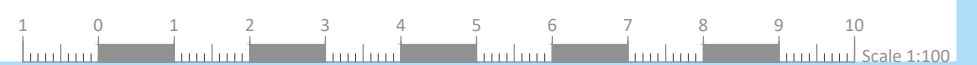
GROUND FLOOR
 PROPOSED
 Scale 1:100



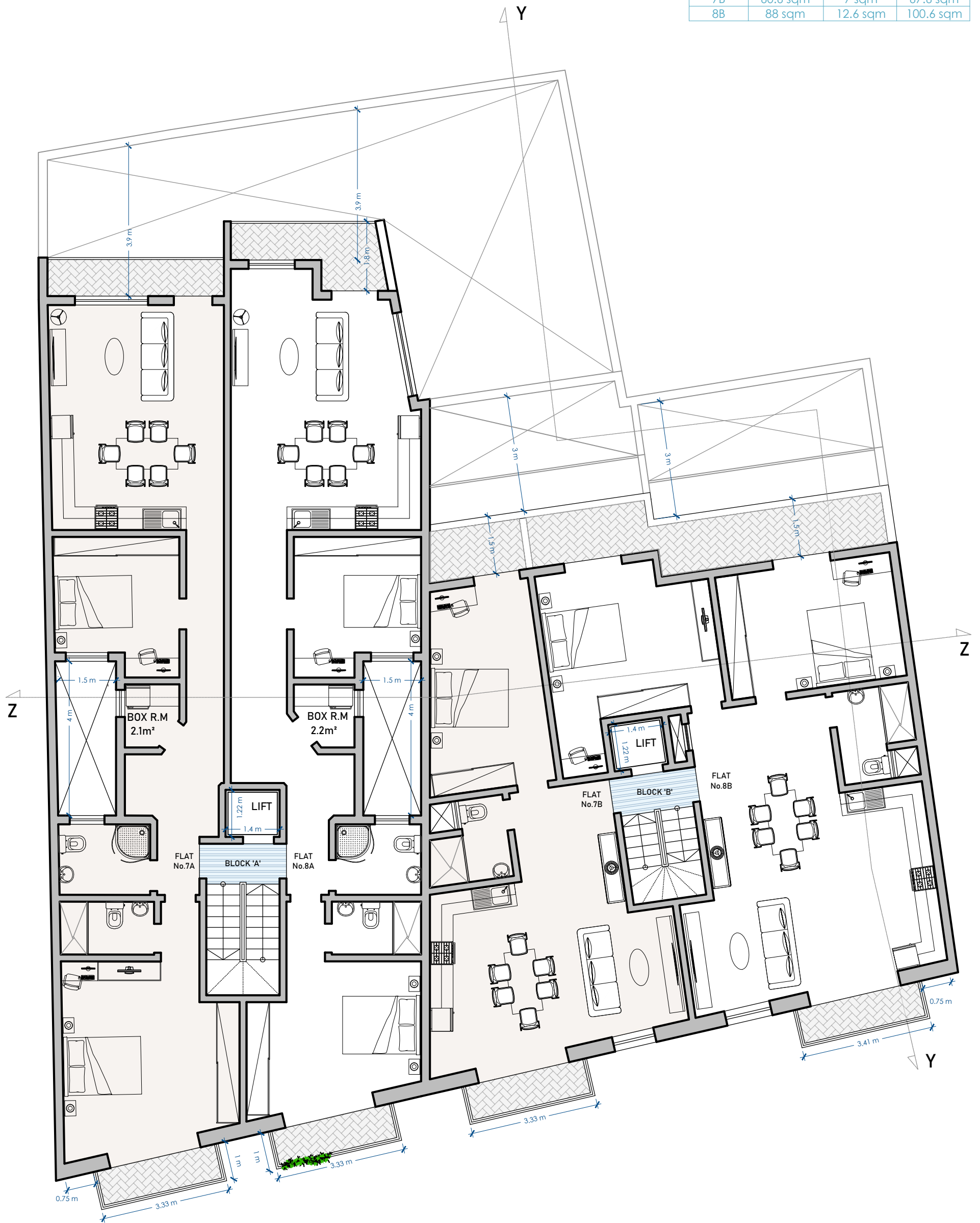
| UNIT | INTERNAL | EXTERNAL | TOTAL |
|------|----------|----------|-----------|
| 3/5A | 94.5 sqm | 8.1 sqm | 102.6 sqm |
| 4/6A | 96.7 sqm | 5.3 sqm | 102 sqm |
| 3/5B | 84.9 sqm | 9 sqm | 93.9 sqm |
| 4/6B | 81.4 sqm | 9.5 sqm | 90.9 sqm |



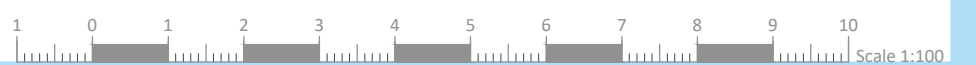
FIRST & SECOND FLOORS
 PROPOSED
 Scale 1:100



| UNIT | INTERNAL | EXTERNAL | TOTAL |
|------|----------|----------|-----------|
| 7A | 94.5 sqm | 8.1 sqm | 102.6 sqm |
| 8A | 95.1 sqm | 6 sqm | 101.1 sqm |
| 7B | 60.6 sqm | 7 sqm | 67.6 sqm |
| 8B | 88 sqm | 12.6 sqm | 100.6 sqm |



THIRD FLOOR
PROPOSED
Scale 1:100





FRONT ELEVATION

PROPOSED
Scale 1:100

- FACADE :LOCAL STONE UNPAINTED & UN RENDERED
- APERTURES :WHITE ALUMINIUM
- GARAGE DOOR :POLYURETHANE UP AND OVER DOOR WHITE FINISH
- BALCONY RAILINGS :WROUGHT IRON PAINTED BLACK

